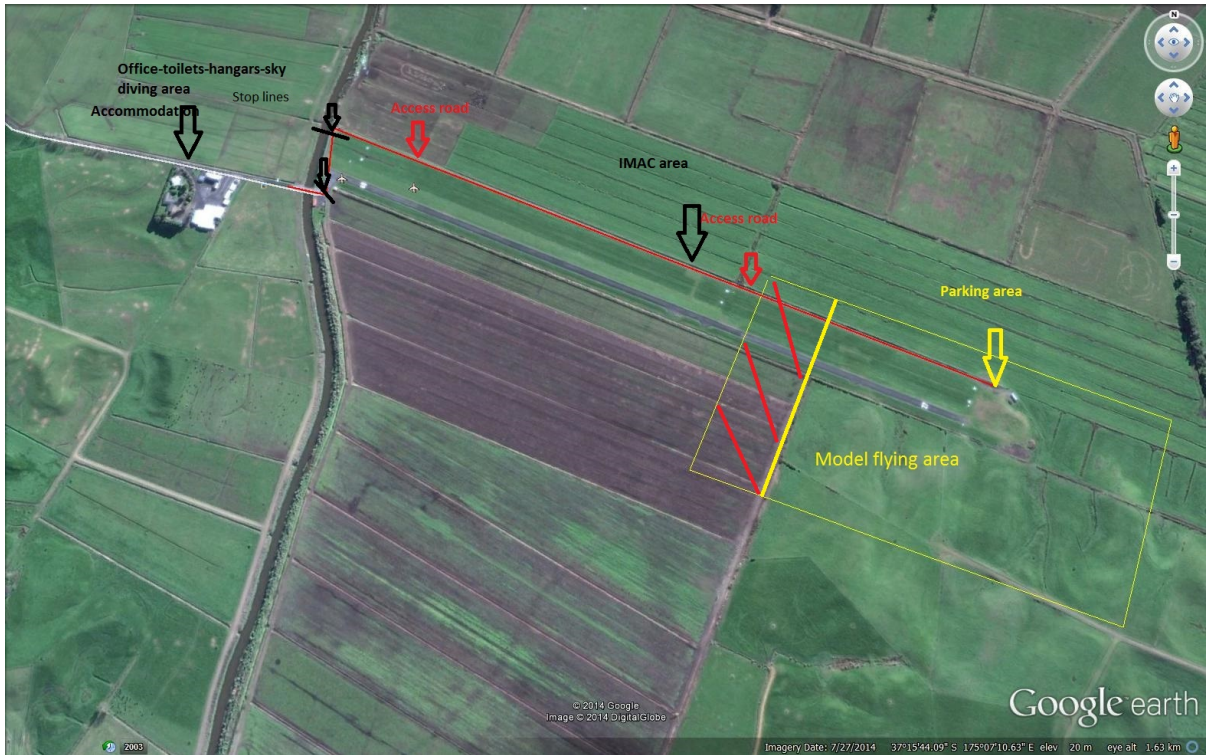


## PMAC Standard Operating Procedures for flying RC models at Mercer Airport

As we are operating on an airfield there are procedures that must be followed to ensure that safety criteria are met. Listed below are procedures for access to the model flying area, please read them in conjunction with a map of the area which is included. The red line is the route to be followed and the black lines each side of the main runway are the points where you must stop when arriving and leaving to make sure the way is clear of full-size aircraft.

- All vehicles must use Hazard lights while inside the operational area and must stop before crossing the western runway threshold, both upon entering and leaving the runway system, to ensure that the runway is clear of departing or arriving full size aircraft. Only cross over the threshold after it has been ascertained that it is clear to do so. Access to the model flying site is via the metal perimeter road that runs along the fence line for the whole length of the runway. Vehicles must not drive on the runway.
- All MFNZ flying rules must be adhered to as well as CAA part 101 rules. This includes a daily check of the integrity of the model and onboard systems
- It is mandatory to have an observer (CAA rules)
- Hi visibility clothing must be worn on the flight line
- A radio watch must be maintained on 133.05 anytime models are flying
- Full size operations have right of way at all times and models must clear the area at the approach of any full size aircraft
- Maximum height of 400' unless approval is obtained for a higher limit
- RC system 'fail safe' must be utilised to bring the motor RPM to idle or cut off in the event of any loss of contact between the transmitter and receiver.
- The general model flying circuit is to the south and models should fly in the circuit pattern when more than one model is in the air at the same time
- Maximum of 5 models in the air at the same time
- Frequency control system must be used when 2 or more *non 2.4ghz* RC are present at the same time
- Models not to be flown to the west more than half way to the canal
- Every person including visitors must be entered into the log book ( inside the container) daily
- Observe the speed limit on the access road (between Koheroa Rd and the airfield) to minimise dust nuisance



Model strip location and access directions

Location of Mercer Airfield off Koheroa Road from either Mercer or Mangatawhiri

